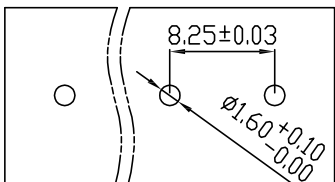
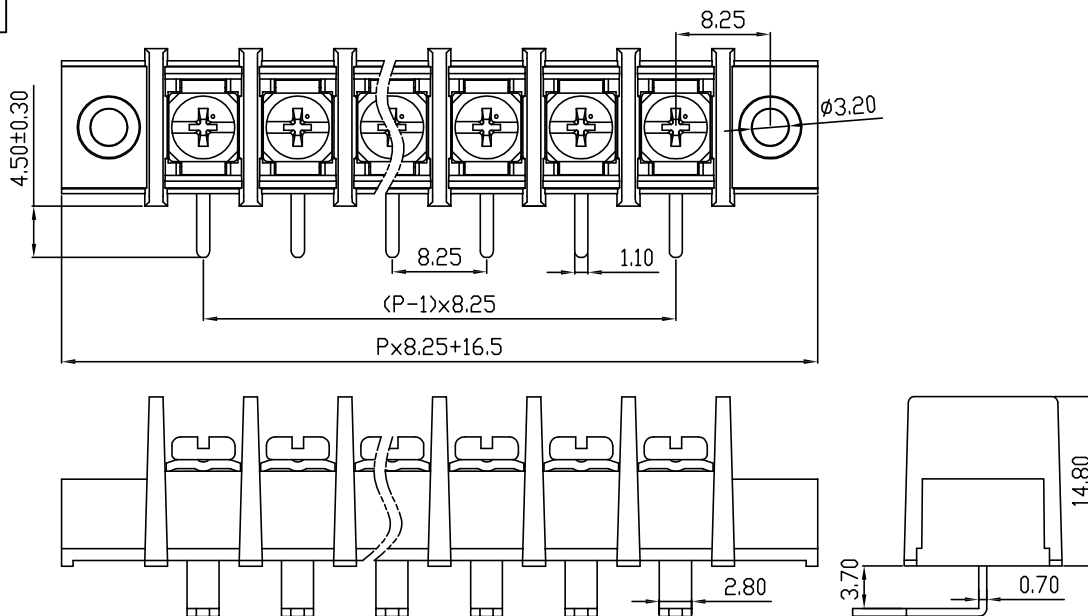


| linear dimension(Tolerances Standard GB/T 14486-2008) |       |              |               |               |                |                 |             | —     | $\nabla$       | $\perp$     |
|-------------------------------------------------------|-------|--------------|---------------|---------------|----------------|-----------------|-------------|-------|----------------|-------------|
| variable range                                        | to 6  | over 6 to 10 | over 10 to 30 | over 30 to 60 | over 60 to 100 | over 100 to 160 | over 160 to | to 10 | over 10 to 100 | over 100 to |
| tolerance                                             | ±0.20 | ±0.30        | ±0.50         | ±0.70         | ±1.00          | ±1.30           | ±1.60       | 0.10  | 0.30           | 0.60        |



PCB Layout



DBT30RM — 8.25 — XXP — C — S/P  
 (Series No.) (Pitch) (Poles) Slotted/Phillips  
 (Color):GN:(Green), BK:(Black), BU:(Blue), RD:(Red), GY:(Gray)  
 OG:(Orange), WT:(White), YL:(Yellow), CR:(Clear)

APPD: JTING Chen 2022.11.27  
 CHKD: Duck Mao 2022.11.27  
 DRFT: Steven Lu 2022.11.27

**DORABO** 宁波地博电气有限公司  
 Ningbo Dorabo Electric CO., Ltd

NAME: DBT30RM-8.25-XXP-C-P

|                        |            |                                                          |     |      |
|------------------------|------------|----------------------------------------------------------|-----|------|
| $\oplus$               | SIZE: A4   | $\leftarrow \frac{\text{mm}}{\text{(inch)}} \rightarrow$ | REV | T0-1 |
| TYPE: CUSTOMER_DRAWING | SCALE: 1:1 | SHEET                                                    | 1/1 |      |

| UL/CUL 技术参数        |                                   | UL/CUL Technical Data |   |   |
|--------------------|-----------------------------------|-----------------------|---|---|
| 等级                 | Use Group                         | B                     | C | D |
| 额定电压               | Rated Voltage [V]                 | 300                   | - | - |
| 额定电流               | Rated Current [A]                 | 20                    | - | - |
| 接线范围               | Wire Range                        | 22-12                 |   |   |
| 单/多芯线              | Solid/Stranded [AWG]              |                       |   |   |
| IEC 技术参数           |                                   |                       |   |   |
| IEC Technical Data |                                   |                       |   |   |
| 额定电压               | Rated Voltage [V]                 | 450                   |   |   |
| 额定电流               | Rated Current [A]                 | 24                    |   |   |
| 耐电压                | Withstanding Voltage [AWG]        | 2500V/1Min            |   |   |
| 导线截面积              | Conductor cross section           | 2.5                   |   |   |
| 硬质/柔性导线            | Solid/flexible [mm <sup>2</sup> ] |                       |   |   |
| 材料                 |                                   |                       |   |   |
| 绝缘材料               | Insulation Material               | PA66                  |   |   |
| 阻燃等级               | Imflamability                     | UL94V-0               |   |   |
| 导体材料               | Contactior Material               | 铜合金 Copper alloy      |   |   |
| 导体表面镀层             | Contactive Coating                | 镀锡 Sn Plated          |   |   |
| 一般参数               |                                   |                       |   |   |
| 间距                 | Pitch [mm]                        | 8.25                  |   |   |
| 极数                 | Poles [P]                         | 02~24                 |   |   |
| 螺丝                 | Screw/扭矩 Torque(Max) [N.m]        | M3/0.8                |   |   |
| 工作温度               | Operating temperatur [°C]         | -40~+105              |   |   |
| 引针尺寸               | Pin Dimensions [mm]               | -                     |   |   |
| PCB板孔径             | PCB Hole Diameter [mm]            | 1.6                   |   |   |