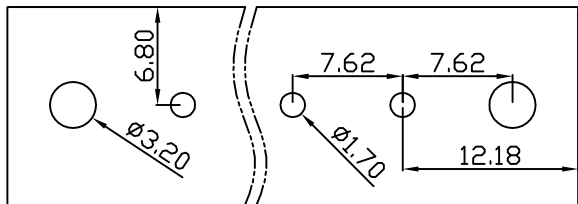
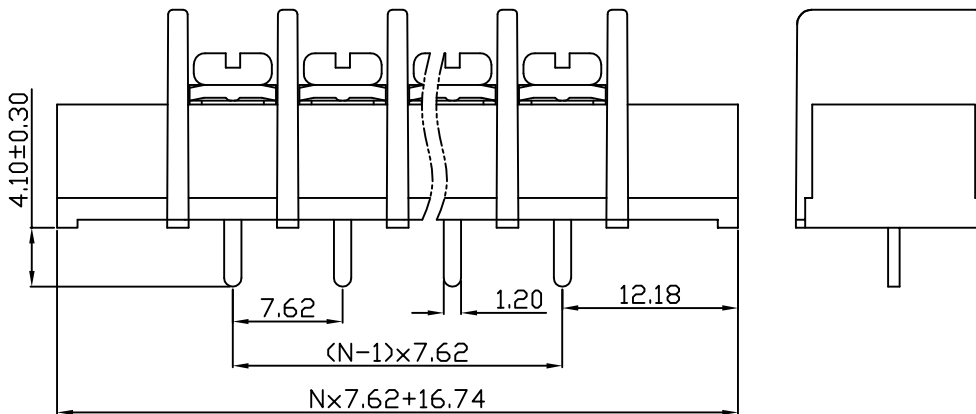
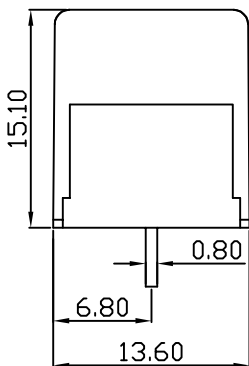
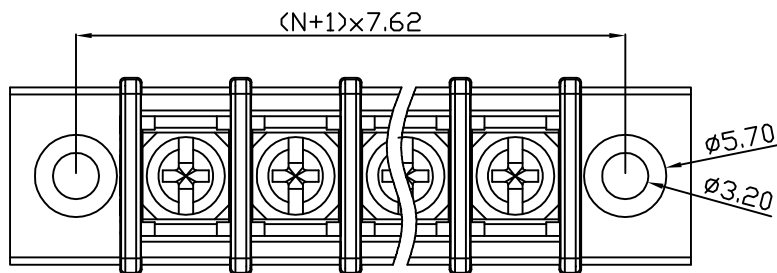


linear dimension(Tolerances Standard GB/T 14486-2008)								—		
variable range	to 6	over 6 to 10	over 10 to 30	over 30 to 60	over 60 to 100	over 100 to 160	over 160 to	to 10	over 10 to 100	over 100 to
tolerance	±0.20	±0.30	±0.50	±0.70	±1.00	±1.30	±1.60	0.10	0.30	0.60



PCB Layout



UL/CUL 技术参数				
UL/CUL Technical Data		B	C	D
等级 Use Group				
额定电压 Rated Voltage [V]		300	-	-
额定电流 Rated Current [A]		15	-	-
接线范围 Wire Range		22-14		
单/多芯线 Solid/Stranded [AWG]				
IEC 技术参数				
IEC Technical Data				
额定电压 Rated Voltage [V]		250		
额定电流 Rated Current [A]		24		
耐电压 Withstanding Voltage [AWG]		2000V/1Min		
导线截面积 Conductor cross section		2.5		
硬质/柔性导线 Solid/flexible [mm²]				
材料 Material				
绝缘材料 Insulation Material		PA66		
阻燃等级 Imflammability		UL94V-0		
导体材料 Contactor Material		铜合金 Copper alloy		
导体表面镀层 Contactive Coating		镀锡 Sn Plated		
一般参数 Other Data				
间距 Pitch [mm]		7.62		
极数 Poles [P]		02-24		
螺丝 Screw/扭矩 Torque(Max) [N.m]		M3/0.5		
工作温度 Operating temperatur [°C]		-40~+105		
引针尺寸 Pin Dimensions [mm]		0.80x1.20		
PCB板孔径 PCB Hole Diameter [mm]		1.70		

DBT30CM — 7.62 — XXP — C — S/P

(Series No.) (Pitch) (Poles)

Slotted/Phillips

(Color) : 1.(Green) 2.(Black) 3.(Blue) 4.(Clear) 5.(Gray)
6.(Orange) 7.(Red) 8.(White) 9.(Yellow)

DORABO

宁波地博电气有限公司
Ningbo Dorabo Electric CO., Ltd

NAME:

DBT30CM-7.62-XXP-C-P

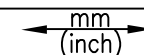
APPD: J.Ting Chen 2022.8.18

CHKD: Duck Mao 2022.8.18

DRFT: Steven Lu 2022.8.18



SIZE: A4



REV

T0-1

TYPE: CUSTOMER_DRAWING

SCALE: 1:1

SHEET

1/1