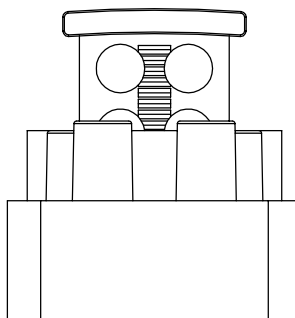
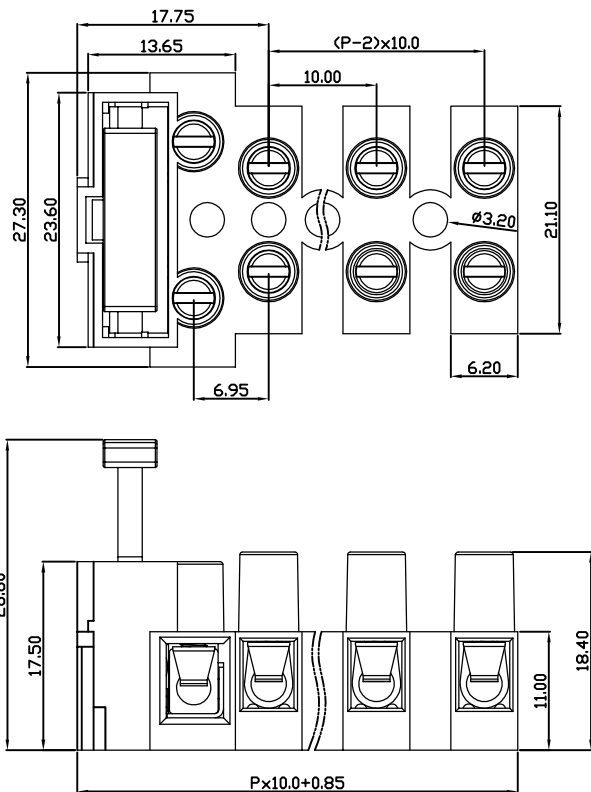


linear dimension(Tolerances Standard GB/T 14486-2008)								—	∇	\perp
variable range	to 6	over 6 to 10	over 10 to 30	over 30 to 60	over 60 to 100	over 100 to 160	over 160 to	to 10	over 10 to 100	over 100 to
tolerance	±0.20	±0.30	±0.50	±0.70	±1.00	±1.30	±1.60	0.10	0.30	0.60



DB801 — 10.0 — XXP — C — S/P
 (Series No.) (Pitch) (Poles) Slotted/Phillips

(Color):GN:(Green), BK:(Black), BU:(Blue), RD:(Red), GY:(Gray)
 OG:(Orange), WT:(White), YL:(Yellow), CR:(Clear)

APPD: JTING Chen 2023.02.22
 CHKD: Duck Mao 2023.02.22
 DRFT: Steven Lu 2023.02.22

UL/CUL 技术参数		UL/CUL Technical Data			
额定电压	Rated Voltage [V]			300	
额定电流	Rated Current [A]			15	
接线范围	Wire Range			22-14	
单/多芯线	Solid/Stranded [AWG]				
IEC 技术参数		IEC Technical Data			
额定电压	Rated Voltage [V]			250	
额定电流	Rated Current [A]			6.3	
耐电压	Withstanding Voltage [AWG]			1600V/1Min	
导线截面积	Conductor cross section			0.5-2.5	
硬质/柔性导线	Solid/flexible [mm ²]				
材料		Material			
绝缘材料	Insulation Material			PA66	
阻燃等级	Imflammability			UL94V-0	
导体材料	Contact Material			铜合金 Copper alloy	
导体表面镀层	Contactive Coating			镀镍 Ni Plated	
一般参数		Other Data			
间距	Pitch [mm]			10.0	
极数	Poles [P]			02~04	
螺丝	Screw/扭矩 Torque(Max) [N.m]			M3/0.5	
工作温度	Operating temperatur [°C]			-40~+105	
引针尺寸	Pin Dimensions [mm]			-	
PCB板孔径	PCB Hole Diameter [mm]			-	

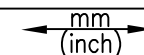
DORABO 宁波地博电气有限公司
 Ningbo Dorabo Electric CO., Ltd

NAME:

DB801-10.0-XXP-C-S



SIZE: A4



REV

T0-1

TYPE: CUSTOMER_DRAWING

SCALE: 1:1

SHEET

1/1